

# Enable personalised career transitions

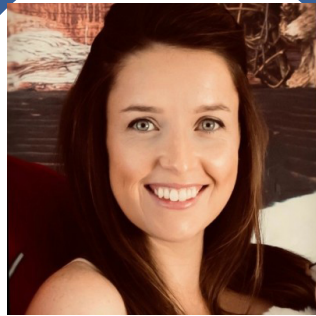
Outplacement Solutions



# Meet Our Team



**Hannah Finlay**  
Project & Client  
Executive, Right  
Management



**Kiara Bradley**  
Project Manager  
Lead, Right  
Management



**Karen  
Bermingham**  
Finance Executive,  
Right Management



**Paul Howard**  
Operations Manager,  
Right Management



**Jonny Edgar**  
Managing Director  
Right Management

# Career transition support for all levels

- Supporting all levels of individuals through challenging times of career change
- Connecting candidates with the appropriate resources for their respective career levels
- Coaching candidates through a personalized experience with unique career goals and outcomes
- Increasing confidence in personal branding and job search skills through speed to market
- Connecting candidates through network of hiring partners and recruiters

## Executive Outplacement

Provide transitioning executives with an elevated, customized experience to identify, land and succeed in their next role

## Individual Outplacement

Prepare transitioning employees from entry level to leaders to identify and land their next career step

## Group Outplacement

Equip wage-earning employees with resources and training to confidently re-enter the job market

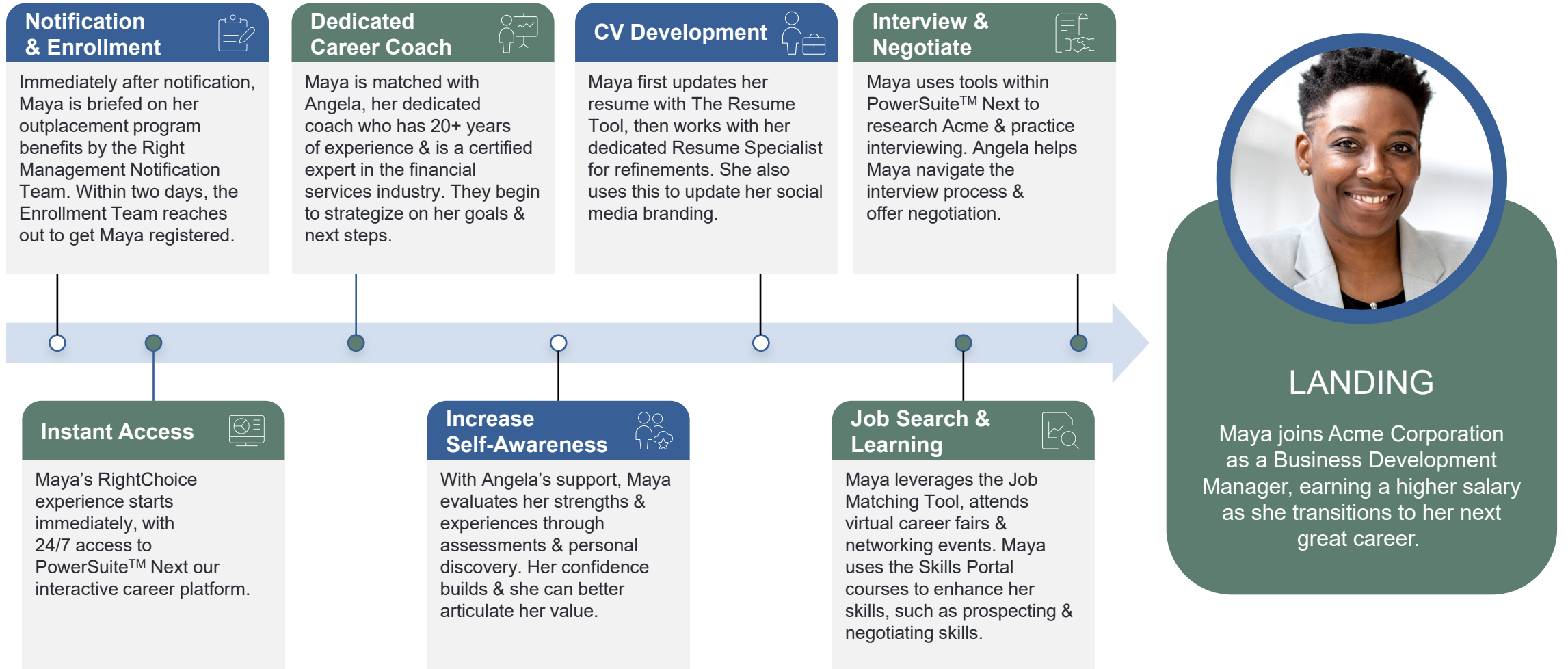
**Additional offerings supported:** Specialty Outplacement • Sports-focused Programs

# Outplacement Solutions adapted to your needs

	Financial	Executive	Individual			Group
Product	Financial Consultancy	Echelon	Advantage	Elevate	Edge	Navigate
Designed for	Voluntary Redundancy Program Evaluation	Highest Level Executives	Entry Level & Administrative	Professionals	Managers & Directors	Wage Earners
Key components	<ul style="list-style-type: none"> <li>Expert financial coaching with an assigned coach</li> <li>Specialist qualified advice</li> <li><b>One to one coaching for sessions of 1 hour</b></li> <li>Redundancy evaluation</li> <li>Retirement planning</li> <li>Pension planning</li> <li>Tax advice</li> <li>Tax planning</li> <li>Financial Planning</li> </ul>	<ul style="list-style-type: none"> <li><b>15* 1:1 executive career &amp; senior coach sessions</b></li> <li><b>1 * Financial or Life Options Coaching Session</b></li> <li>Leadership coaching</li> <li>Leadership assessments</li> <li>PowerSuite Next learning portal</li> <li>Personalised on-demand instructor-led learning</li> <li>Curated executive content</li> <li><b>Executive ongoing recruiter placement support</b></li> </ul>	<ul style="list-style-type: none"> <li>2 * 1:1 coaching Sessions</li> <li>Half day career transition workshop</li> <li>PowerSuite Next learning portal</li> <li>Personalised webinars on various outplacement topics</li> <li>Personality assessment</li> <li>CV &amp; Interviewing tool</li> <li>Job search tool &amp; hiring events</li> </ul>	<ul style="list-style-type: none"> <li>6 * 1:1 coaching sessions</li> <li>Half day <b>career transition workshops</b></li> <li>PowerSuite Next learning portal</li> <li>Personalised webinars on various outplacement topics</li> <li>Personality assessment</li> <li>CV &amp; Interviewing tools</li> <li>Job search tool &amp; hiring events</li> <li><b>Recruiter placement support</b></li> </ul>	<ul style="list-style-type: none"> <li>10 * 1:1 coaching sessions</li> <li>CV coach</li> <li>PowerSuite Next portal</li> <li>Half day career transition workshops</li> <li>Personality assessment</li> <li><b>Executive Recruiter support</b></li> <li>CV &amp; Interviewing tools</li> <li>Personalised webinars on various outplacement topics</li> <li>Job search tool &amp; hiring events</li> <li><b>Curated executive content</b></li> </ul>	<ul style="list-style-type: none"> <li>In-person or virtual instructor-led learning</li> <li>With or without cv deliverable</li> <li>Suitable for volume operative or factory roles</li> <li>Delivered in groups of up to 15 employees.</li> <li>Half day &amp; full day sessions available</li> </ul>
Learning modules topics include:	<b>Executive</b> Essentials: Personal Branding, Resume, LinkedIn, Interviewing, Negotiating  <b>Executive</b> Learning Series: Building Executive Presence, Private Equity, Serving on Boards		Job Search: Personal Branding, Resume, LinkedIn, Search Strategies, Interviewing, Negotiating, Career Change Exploration & Implementation, Upskilling & Reskilling  Career Alternatives: Entrepreneurial and Retirement Life Options			Job Search: Resume & Applications, Job Search Planning, Interviewing
Program duration	1 day	9 Months	1 month	3 months	6 months	Workshop
Ongoing support	Follow up or series of sessions can be arranged upon request.	Onboarding (90 days) Continuous Connections & Alumni	Alumni	Continuous Connections & Alumni	Continuous Connections & Alumni	N/A

All Executive and Individual products include PowerSuite™ Next\* digital platform, program management, and aggregate reporting. Program configuration estimated based on specific needs where applicable

# Typical outplacement journey



# What makes Right Management different?



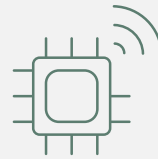
## Expert Advisors

Deep expertise in transitioning workforce with experience across industry sectors



## Personal Touch

Certified career coaches engage with candidates with empathy and care



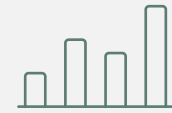
## Technology Enabled

Proprietary outplacement portal with curated content for today's job seeker



## Global Scale

Flexible and rapid deployment across geographies and functions



## Operational Excellence

World class project management for optimized results



# Proven impact and results with Right Management

98%

Satisfaction Rate

Across all program levels, participants report **positive experiences** and satisfaction

2X

Faster Landing

Participants **land 2X faster\*** than the BLS average

98%

Better Prepared

Participants **feel better prepared** for their transition

90%

Positive Perception

Participants have an increased **positive perception** of their former employer

\*Right Choice program participants

# Don't just take our word for it:

“

Love working with the Right Management staff, very accommodating. Always get an immediate response to my questions. The employees that have attended your program found it to be very helpful in preparing them for their job search after being away from it for some time.

**Director of HR**

Responsive to our needs. On-site RM employee is knowledgeable, empathetic and easy to work with. Requests for reports have been delivered in a timely manner.

**Head of Americas  
HR and Recruiting**

Our consultant is amazing. He really is willing to help us out no matter how short the notice and he handles all of our departing employees with a true compassion.

**HR Operations  
Director**

I continue to be impressed with Right Management's flexibility and ingenuity – the ability to find solutions and put the customer first.

**Senior Org  
Development  
Consultant**

Right Management offers a wide variety of services that are of great benefit to individuals impacted by staff reductions. They demonstrated flexibility in logistical assistance and modifications as needed and exhibited a high degree of customer service. It is a pleasure to work with Right Management.

**VP of Human  
Resources**

”



# Experience and expertise widely recognized

**40+ years**  
of consulting experience

Presence in  
**over 75+  
countries**

Experienced bench of  
**500+ experts  
and coaches**

**10K+  
clients**  
served



# Experience and expertise widely recognized



“

Right Management continues to be a prominent player in the global outplacement and career transition market. Its proprietary candidate portal, combined with its consultative approach has created a strong proposition for its clients across various industries and buyer segments.”

”

- Krishna Charan, Practice Director at Everest Group

[View the 2023 Assessment](#)

# Thank You

